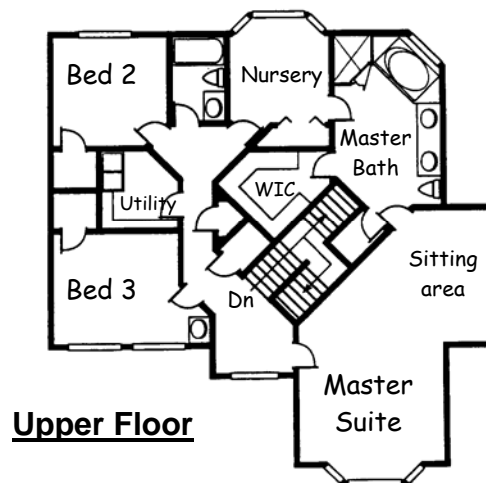
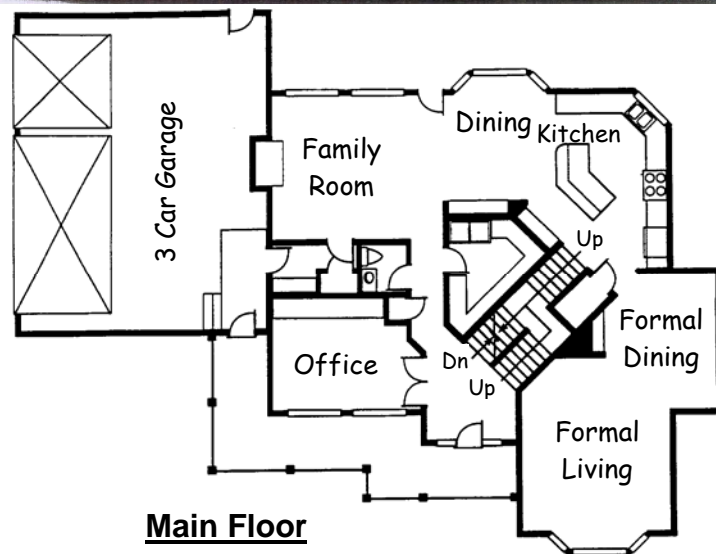


THE SAVANNAH

Classic Two Stories

- Innovative floor plan
- Roomy & elegant

Plan #116
Total: 3,860 sq. ft
73' 6" x 58' 6"
4 Bedrooms/Nursery
2-1/2 Baths



**Todd Alder
Construction**
Phone: 435-283-8612
Fax: 435-283-5672

◆
728 East 25 South
Ephraim, UT 84627



ToddAlder
CONSTRUCTION