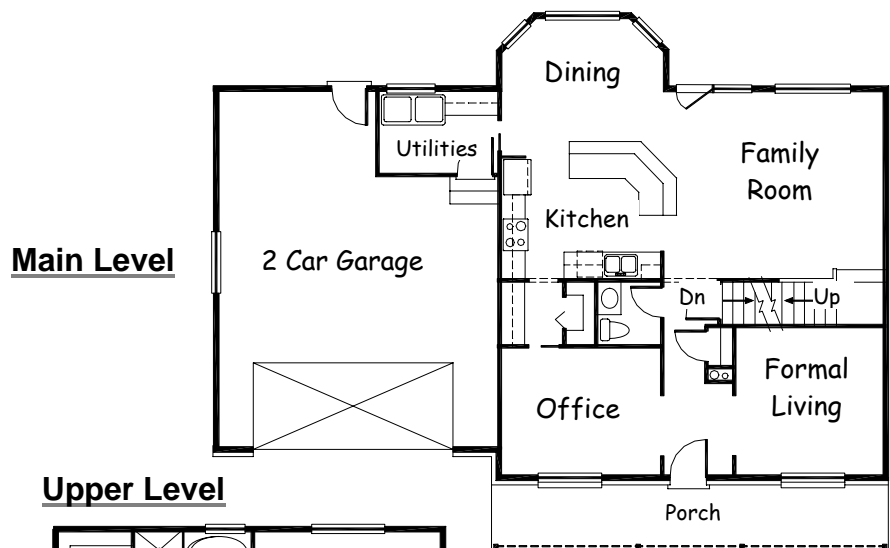


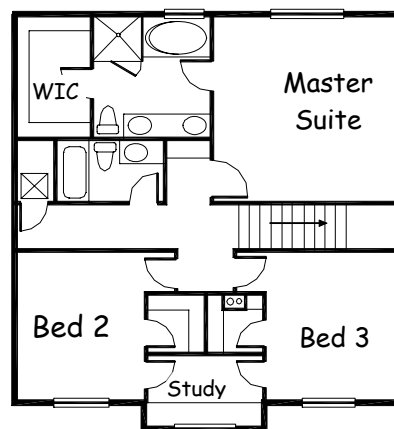
THE BRIDGEPORT

2-Story

Plan #2175
Main: 1,185 sq. ft
Upper: 990 sq. ft
Total: 2,175 sq. ft
55' 0" x 38' 0"
3 Bedrooms
2-1/2 Baths



Upper Level



- Nobody can resist from falling in love with this charming house.
- Master Suite includes a luxury bath suite, and spacious walk-in closet.
- Family Room, Dining, and Kitchen combination is perfect for uniting the family growing together

Todd Alder
Construction
Phone: 435-283-8612
Fax: 435-283-5672

728 East 25 South
Ephraim, UT 84627

