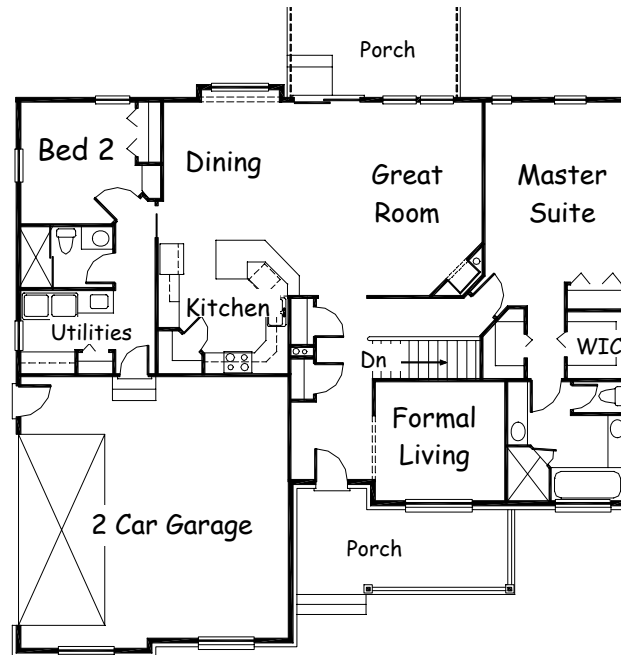


THE ELKMONT

Unique Rambler

Plan #1865
Main: 1,865 sq. ft
57' 0" x 52' 0"
2 Bedrooms
2 Baths



- This floor plan focuses the parents' desire.
- Master Suite includes a luxury bath suite, and his and her walk-in closet.
- Family Room, Dining, and Kitchen combination opens the house up to light and life.
- The Garage is built to contain all the family's recreational gear.

**Todd Alder
Construction**
Phone: 435-283-8612
Fax: 435-283-5672

♦
728 East 25 South
Ephraim, UT 84627



ToddAlder
CONSTRUCTION