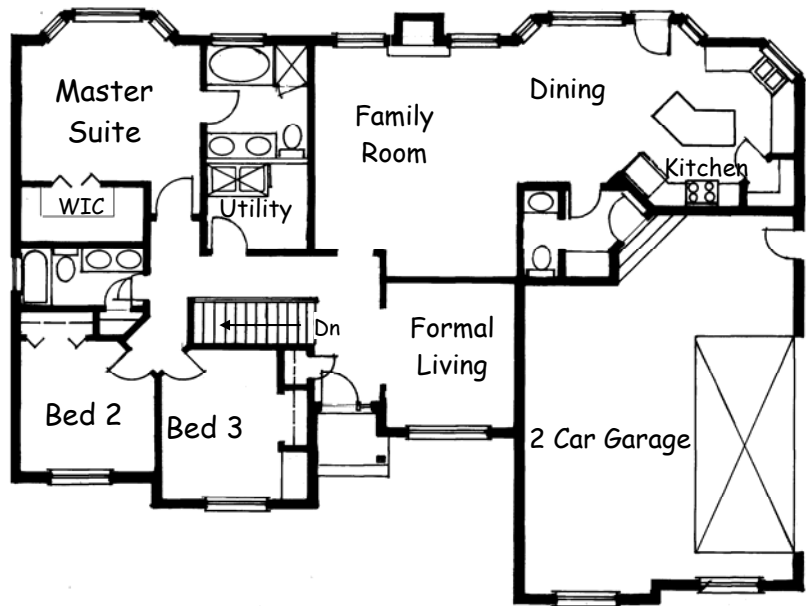


THE NORMANDY

Unique Rambler

Plan #1851
Main: 1,851 sq. ft
45' 0" x 65' 6"
3 Bedrooms
2-1/2 Baths



- Comfort and style enhance this open and efficient floor plan.
- Master Suite includes roomy walk-in closet and bathroom.
- Spacious 2- car garage can be built with front or side entry.
- Family atmosphere with Family Room, Dining, and Kitchen combination.

**Todd Alder
Construction**
Phone: 435-283-8612
Fax: 435-283-5672

◆
728 East 25 South
Ephraim, UT 84627



ToddAlder
CONSTRUCTION