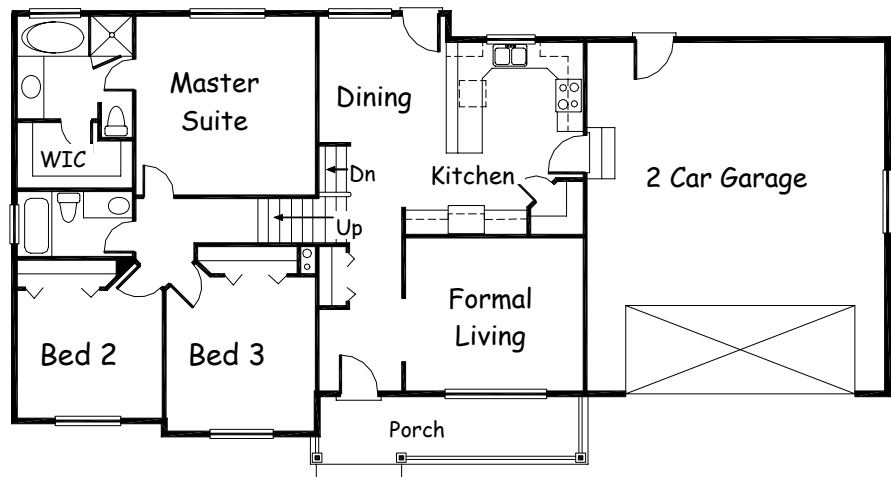


THE MEADOWBROOK

Split Level

Plan #1409
Main: 629 sq. ft
Upper: 780 sq. ft
Total: 1,409 sq. ft
69' 6" x 33' 0"
3 Bedrooms
2 Baths



**Todd Alder
Construction**
Phone: 435-283-8612
Fax: 435-283-5672

◆
**728 East 25 South
Ephraim, UT 84627**

- This house is designed with the family unit in mind.
- Master Suite includes a luxury bath suite and a walk-in closet.
- Enlarged kitchen endows the house with a grandeur appearance.
- Split-level basement provides extra room for bedrooms, baths, storage, and rec. rooms.

