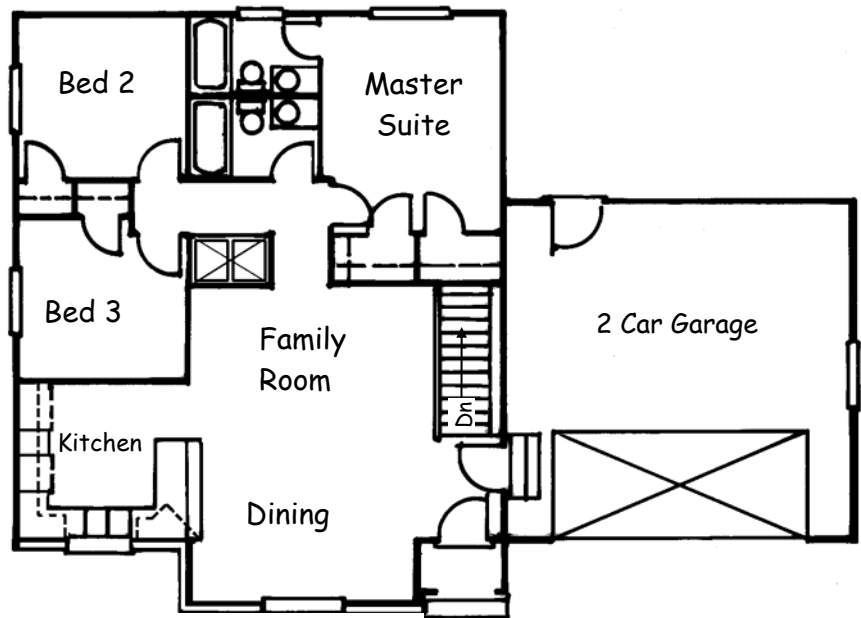


THE BRISTOL

Unique Rambler

Plan #1115
Main: 1,115 sq. ft
53' 0" x 38' 0"
3 Bedrooms
2 Baths



- This compact design contains all the rooms necessary for casual living.
- Master Suite includes roomy closet and bathroom.
- 2- car garage offers storage for recreational vehicles, sporting equipment, and tools.
- Full basement provides inexpensive expansion or income producing accessory apartment.

**Todd Alder
Construction**
Phone: 435-283-8612
Fax: 435-283-5672

◆
728 East 25 South
Ephraim, UT 84627



ToddAlder
CONSTRUCTION